

2011 – 2012 Peace River Report No. 8

Ground observations along the Peace River located the ice front at km 412 (approximately 16 km downstream of the Highway 2 Bridge at the Town of Peace River) at 11:07 MST on January 31st. Mean daily temperatures near the freezing mark have slowed the advance of the ice front since the cold snap in mid-January. Over the past week the ice front has advanced only 14 km and at an average rate of 2.0 km/day. The above seasonal temperatures are forecast to continue until the end of the week with near seasonal temperatures forecast for early next week. We can expect the ice front to continue its slow advance upstream until cooler temperatures prevail.

Alberta Environment and Water, and BC Hydro are in contact regarding river ice conditions and operation of the BC Hydro Peace River facilities.

Observation Details

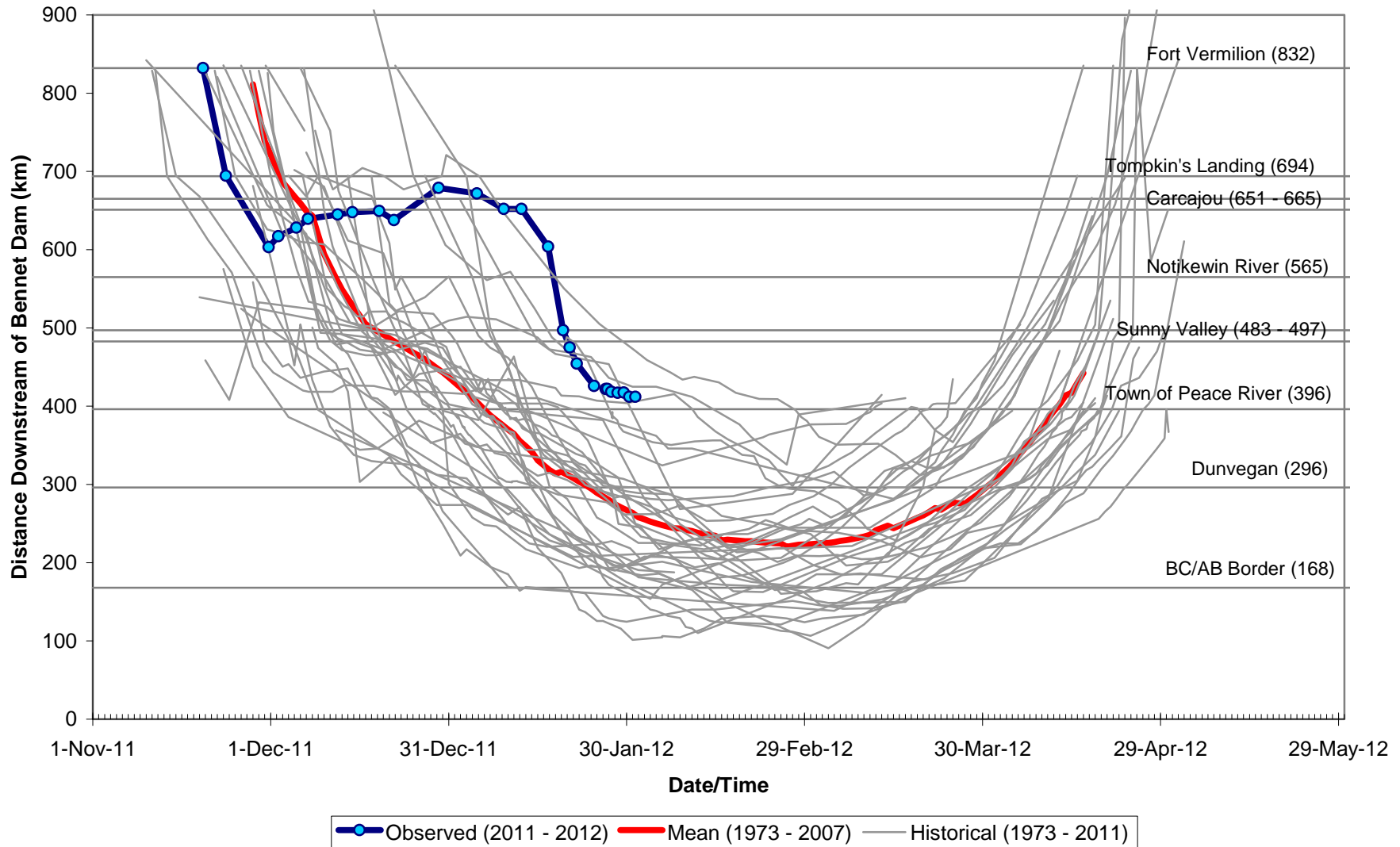
- January 25 – Ground observations
 - km 420 to 422 – Ice cover was observed to be moving, therefore ice front is downstream of km 422 at 11:10 MST
 - km 420.5 – Surface ice concentration estimated at 80 to 90%
- January 26 – Ground observations
 - km 417 (near Shell Intake) – Surface ice concentration estimated at 50%
 - km 420.5 – Surface ice concentration estimated at 95%
 - km 422 – Ice cover appears to have stopped moving, therefore ice front location at 10:40 MST
- January 27 – Ground observations
 - km 413 (Hwy. 986 Bridge) – Surface ice concentration estimated at less than 40%
 - km 417 – Surface ice concentration estimated at less than 40%
 - km 418.5 – Ice front location at 10:10 MST
- January 28 – Ground observations
 - km 413 – Surface ice concentration estimated at 40 to 50%
 - km 417 – Ice front at 11:20 MST, approximately 200m upstream of the Shell Intake
- January 29 – Ground observations
 - km 413 – Surface ice concentration estimated at 85 to 90%
 - km 417.5 – Ice front at 12:10 MST
- January 30 – Ground observations
 - km 396 to 400 – Surface ice concentration estimated at no more than 40%
 - km 412 – Ice front location at 11:00 MST
- January 31 – Ground observations
 - km 403 – Surface ice concentration estimated at 20%
 - km 412 – Ice front location at 11:07 MST
 - km 413 – Ice cover has consolidated/shoved more since yesterday's observation

Temperature Forecast

The following table contains Environment Canada's observed and forecasted daily maximum and minimum temperatures through to Monday, 6 February.

Day	Date	Location		
		High Level	Peace River	Fort St. John
Yesterday	30 January	-15.6 / -19.4	-6.9 / -16.7	2.6 / -17.1
Today	31 January	-14	0	4
Wednesday	1 February	-11 / -23	-1 / -8	2 / -3
Thursday	2 February	-4 / -20	-1 / -10	5 / -4
Friday	3 February	4 / -6	6 / -2	8 / 2
Saturday	4 February	1 / -5	-1 / -4	8 / -4
Sunday	5 February	-11 / -16	-4 / -7	-8 / -10
Monday	6 February	14 / -22	-9 / -14	-9 / -15
Average Max/Min for 31 January		-14 / -26	-9 / -20	-7 / -19

Observed Peace River Ice Front Locations 2011-2012



The next satellite image is scheduled for 18:37 MST January 31 and ground observations will continue this week.