

2011 – 2012 Peace River Report No. 10

Ground observations along the Peace River located the ice front at km 403 (approximately 7 km downstream of the Highway 2 Bridge at the Town of Peace River) at 11:35 MST on February 10th. Since Monday, February 6th the ice front has advanced 12 km. Since Wednesday the 8th, the ice front has advanced at a rate of 4.5 km/day. Seasonal temperatures over the past few days have caused the ice front to resume its advance towards the Town of Peace River. By Sunday, temperatures are forecasted to increase, with daily highs approaching 0°C.

Alberta Environment and Water, and BC Hydro are in contact regarding river ice conditions and operation of the BC Hydro Peace River facilities.

Observation Details

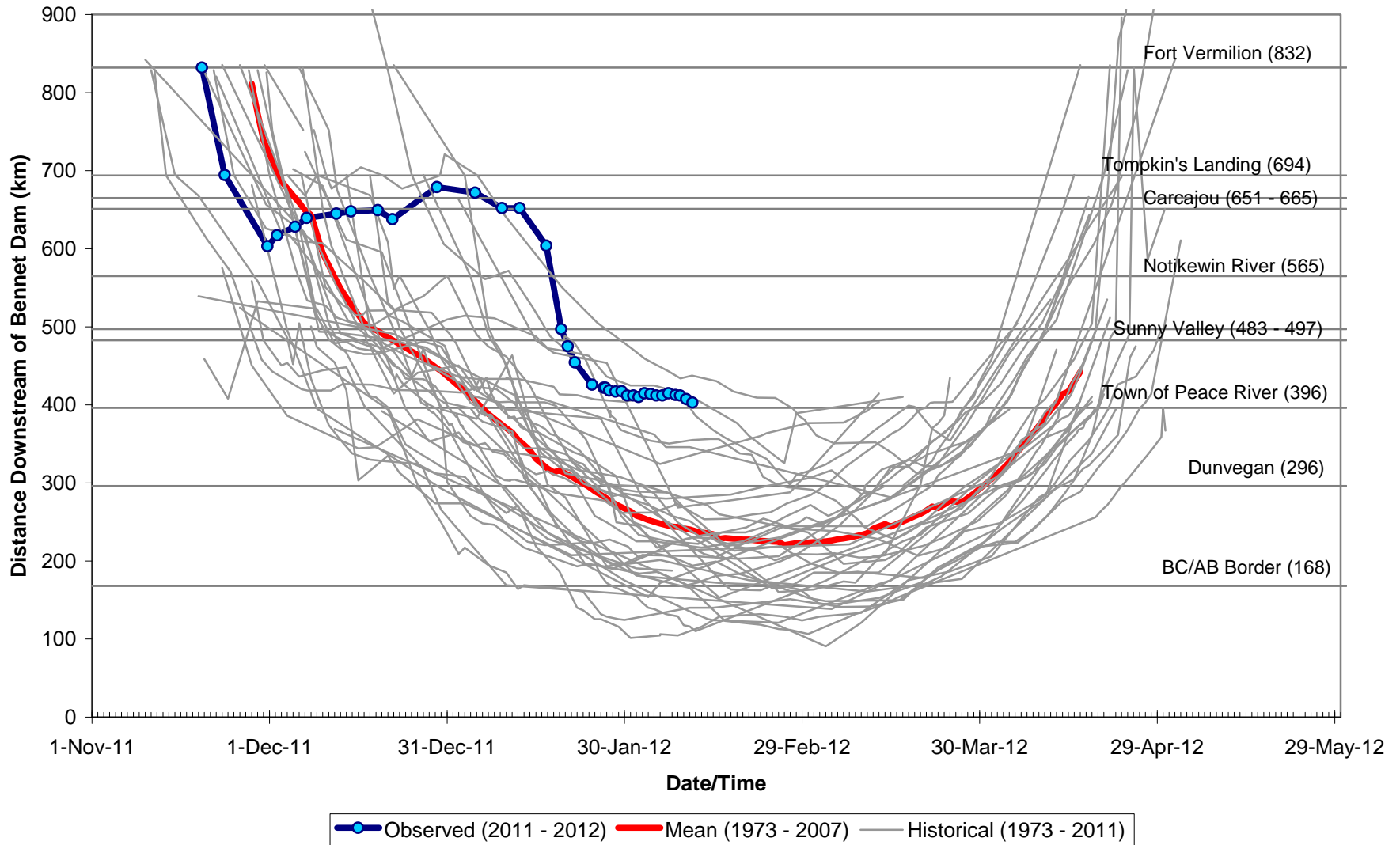
- February 7 – Ground observations
 - km 412.5 – Ice front at 14:30 MST, just upstream of the Hwy. 986 Bridge
 - km 397 – Surface ice concentration estimated at no more than 30%
- February 8 – Ground observations
 - km 412 – Ice front at 9:40 MST
- February 9 – Ground observations
 - km 404 – Surface ice coverage estimated at 60%
 - km 407.5 – Ice front at 10:15 MST. Estimated incoming ice concentration is 90%
- February 10 – Ground observations
 - km 413 – No change in the ice cover at the Hwy. 986 Bridge
 - km 403 – Ice front at 11:35 MST. Estimated incoming ice concentration is 90%
 - km 397 – Surface ice concentration estimated at 40%

Temperature Forecast

The following table contains Environment Canada's observed and forecasted daily maximum and minimum temperatures through to Thursday, 16 February.

Day	Date	Location		
		High Level	Peace River	Fort St. John
Yesterday	9 February	-15.4 / -27.2	-16.0 / -23.3	N/A
Today	10 February	-16	-12	-11
Saturday	11 February	-11 / -20	-11 / -20	-4 / -18
Sunday	12 February	-7 / -22	4 / -13	1 / -3
Monday	13 February	-4 / -15	-2 / -8	0 / -8
Tuesday	14 February	-6 / -18	-2 / -11	0 / -6
Wednesday	15 February	-6 / -15	-4 / -11	-4 / -9
Thursday	16 February	-9 / -19	-5 / -13	-6 / -13
Average Max/Min for 10 February		-12 / -25	-8 / -19	-6 / -15

Observed Peace River Ice Front Locations 2011-2012



Ground observations will continue over the weekend and into next week.