

2011 – 2012 Peace River Report No. 16

The latest ground observation along the Peace River located the ice front at km 384.6 (approximately 11.4 km upstream of the Highway 2 Bridge at the Town of Peace River) at 10:10 MST on March 12th.

Warmer weather at the end of last week has finally brought the recession of the ice front. Thermal breakup of the Peace River is occurring well in advance of the average breakup date and spring runoff. The ice front is expected to pass by the Town of Peace River in the next few days.

Alberta Environment and Water, and BC Hydro are in contact regarding river ice conditions and operation of the BC Hydro Peace River facilities.

Observation Details

- March 9 – Ground observations
 - km 388.6 (mouth of the Smoky River) – A resident living near the Smoky River reported that a lead, approximately 10m wide by 1.5km long, had opened up near the mouth of the Smoky River. Other smaller leads are also present
- March 10 – Ground observations
 - km 370.6 (Shaftesbury Ferry) – Channel is approximately 95% open
 - km 372.2 – Ice front at 9:30 MST and the channel is approximately 80% open
 - km 372.3 to 373.7 – Most of the far left channel is open for nearly the full width
- March 11 – Ground observations
 - km 370 to 372 – The majority of the channel is approximately 95% open
 - km 372 to 374.2 – Centre and left channels are open around the island
 - km 374.2 to 376 (McAllister Creek) – Left channel is open through the islands
 - km 376 to 377.4 – Right channel is open
 - km 377.4 to 377.8 – Brash ice upstream of ice front
 - km 377.8 – Ice front at 9:00 MST
 - km 377.8 to 378.5 – Some small leads have opened up along the channel centerline
 - km 379.5 to 380 – A string of open leads is present along the left side

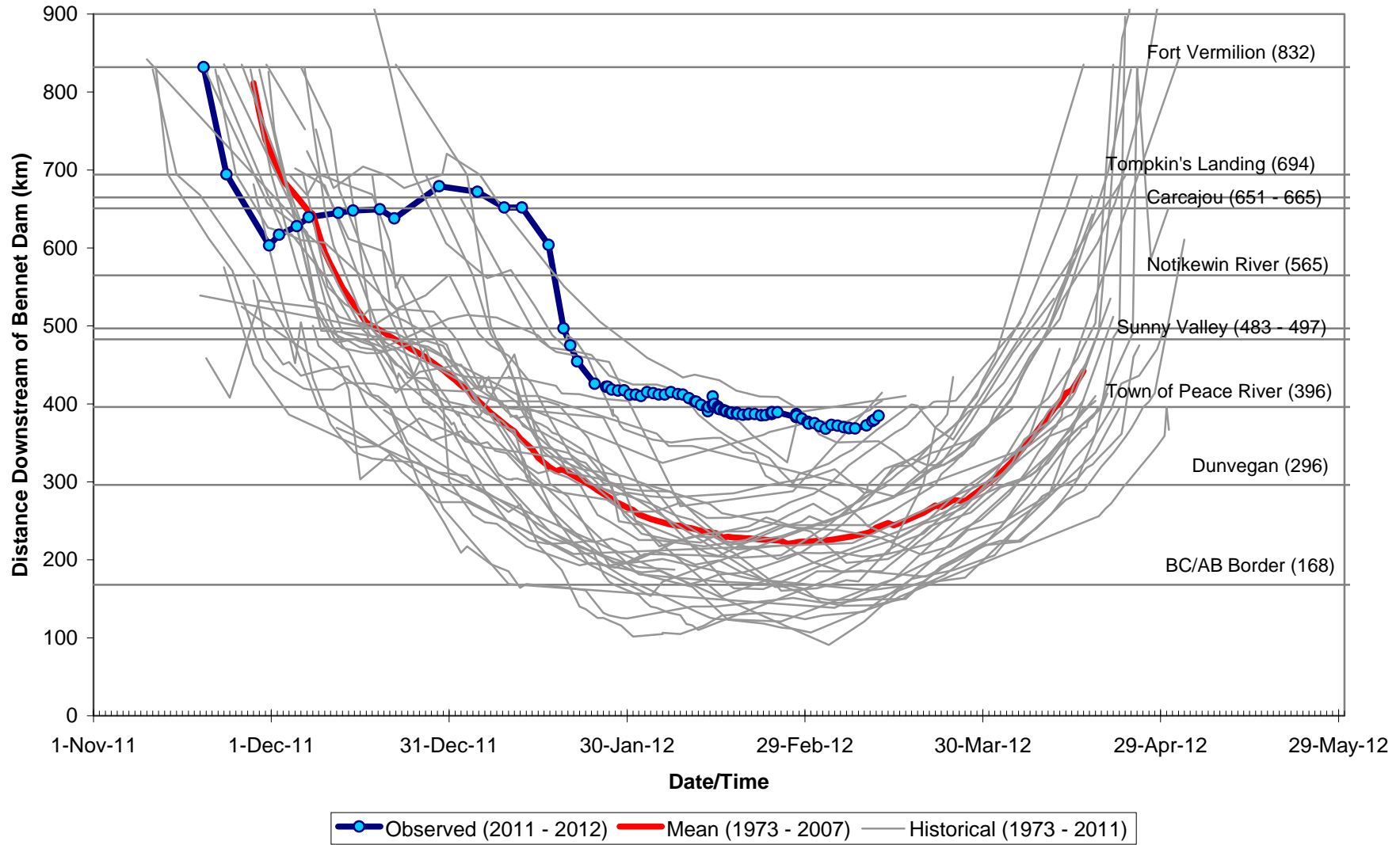
 - km 379.2 – Upstream end of brash ice
 - km 379.8 – Ice front at 18:20 MST, location is approximately 1.5km upstream of the Peace River Correctional Centre
- March 12 – Ground observations
 - km 380 to 383 – Channel is approximately 50% open
 - km 383 to 384.4 – Channel is approximately 30% open
 - km 384.4 to 384.6 – Brash ice
 - km 384.6 – Ice front at 10:10 MST
 - km 385 to 385.5 – Ice cover is potholed
 - km 385.5 to 386.9 – Ice cover is intact
 - km 386.9 to 389.8 – Open lead approximately 30m wide
 - km 386.9 to 405 – No changes noted in ice cover

Temperature Forecast

The following table contains Environment Canada's observed and forecasted daily maximum and minimum temperatures through to Sunday, 18 March.

Day	Date	Location		
		High Level	Peace River	Fort St. John
Yesterday	11 March	n/a	6.8 / -4.8	2.4 / -2.5
Today	12 March	-7	3	-2
Tuesday	13 March	-10 / -16	-3 / -10	-4 / -12
Wednesday	14 March	-8 / -18	2 / -17	2 / -9
Thursday	15 March	0 / -19	7 / -8	5 / -6
Friday	16 March	1 / -7	7 / -1	6 / -2
Saturday	17 March	-1 / -8	5 / -4	-2 / -6
Sunday	18 March	-3 / -12	2 / -6	-4 / -9
Average Max/Min for 12 March		-3 / -17	0 / -12	0 / -9

Observed Peace River Ice Front Locations 2011-2012



Ground observations will continue until the ice front is downstream of the Shell Canada water intake near Highway 986.