

2011 – 2012 Peace River Report No. 17

The latest ground observation along the Peace River located the ice front at km 395.2 (approximately 0.8 km upstream of the Highway 2 Bridge at the Town of Peace River) at 13:40 MST on March 14th. The recession of the ice front has finally brought it within the limits of the Town of Peace River. However, cooler than normal temperatures have caused the recession to slow considerably. Breakup of the ice cover still continues in a thermal manner, well ahead of snowmelt runoff, and river levels in the Peace River at Peace River continue to fall.

Alberta Environment and Water, and BC Hydro are in contact regarding river ice conditions and operation of the BC Hydro Peace River facilities. BC Hydro has resumed normal operations as of 00:00 March 13, however daily flows will remain near the controlled flow value.

Observation Details

- March 13 – Ground observations
 - km 394.5 – Start of small open lead
 - km 393.2 – Ice front at 10:50 MST
 - km 393 – Upstream end of brash ice
 - km 391.5 – Approximately 60% of the far right channel is open

 - km 393.4 – Ice front at 15:05 MST

 - km 393.45 – Ice front at 19:25 MST and approximately 50 m of brash ice is present upstream of the front.
 - km 393.45 to 395.0 – A series of open leads extends downstream of the front

- March 14 – Ground observations
 - km 395.0 – Ice front at 07:35 MST

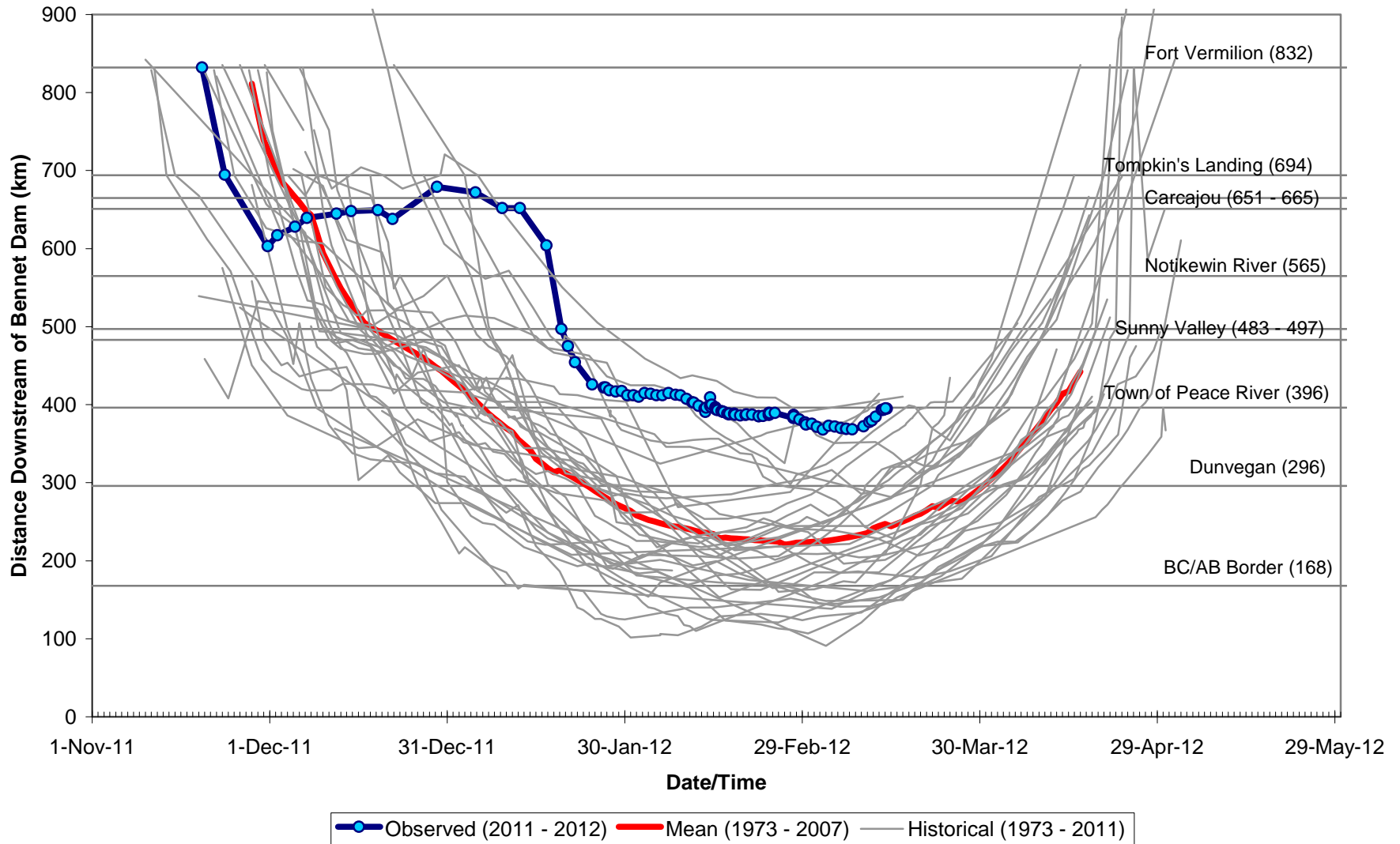
 - km 395.2 – Ice front at 13:40 MST
 - km 395.2 to 395.4 – Small open leads are present downstream of the front
 - km 396.3 – A small open lead is present downstream of the Highway 2 Bridge and on the left side of the channel

Temperature Forecast

The following table contains Environment Canada's observed and forecasted daily maximum and minimum temperatures through to Tuesday, 20 March.

Day	Date	Location		
		High Level	Peace River	Fort St. John
Yesterday	13 March	n/a	-6.1 / -15.2	-10.8 / -17.1
Tonight	14 March	-18	-14	-9
Thursday	15 March	-2	5	4
Friday	16 March	-5 / -8	3 / -4	6 / -5
Saturday	17 March	-6 / -15	-2 / -9	-4 / -12
Sunday	18 March	-8 / -14	-5 / -5	-6 / -13
Monday	19 March	-2 / -12	1 / -8	-3 / -11
Tuesday	20 March	-2 / -15	4 / -10	0 / -10
Average Max/Min for 14 March		-2 / -17	0 / -12	0 / -9

Observed Peace River Ice Front Locations 2011-2012



Ground observations will continue until the ice front is downstream of the Shell Canada water intake near Highway 986.