

2011 – 2012 Peace River Report No. 20

The latest ground observation along the Peace River located the ice front at km 394.5 approximately 1.5 km upstream of the Highway 2 Bridge at the Town of Peace River) at 10:00 MST on March 23th. Recent cool temperatures and ice production have caused the ice front to advance upstream past the Hwy. 2 and rail bridges to the mouth of the Heart River. The ice cover should resume its recession downstream with the arrival of warmer temperatures forecasted for next week. Erosion of the ice cover is expected to continue as usual.

Alberta Environment and Water, and BC Hydro are in contact regarding river ice conditions and operation of the BC Hydro Peace River facilities.

Observation Details

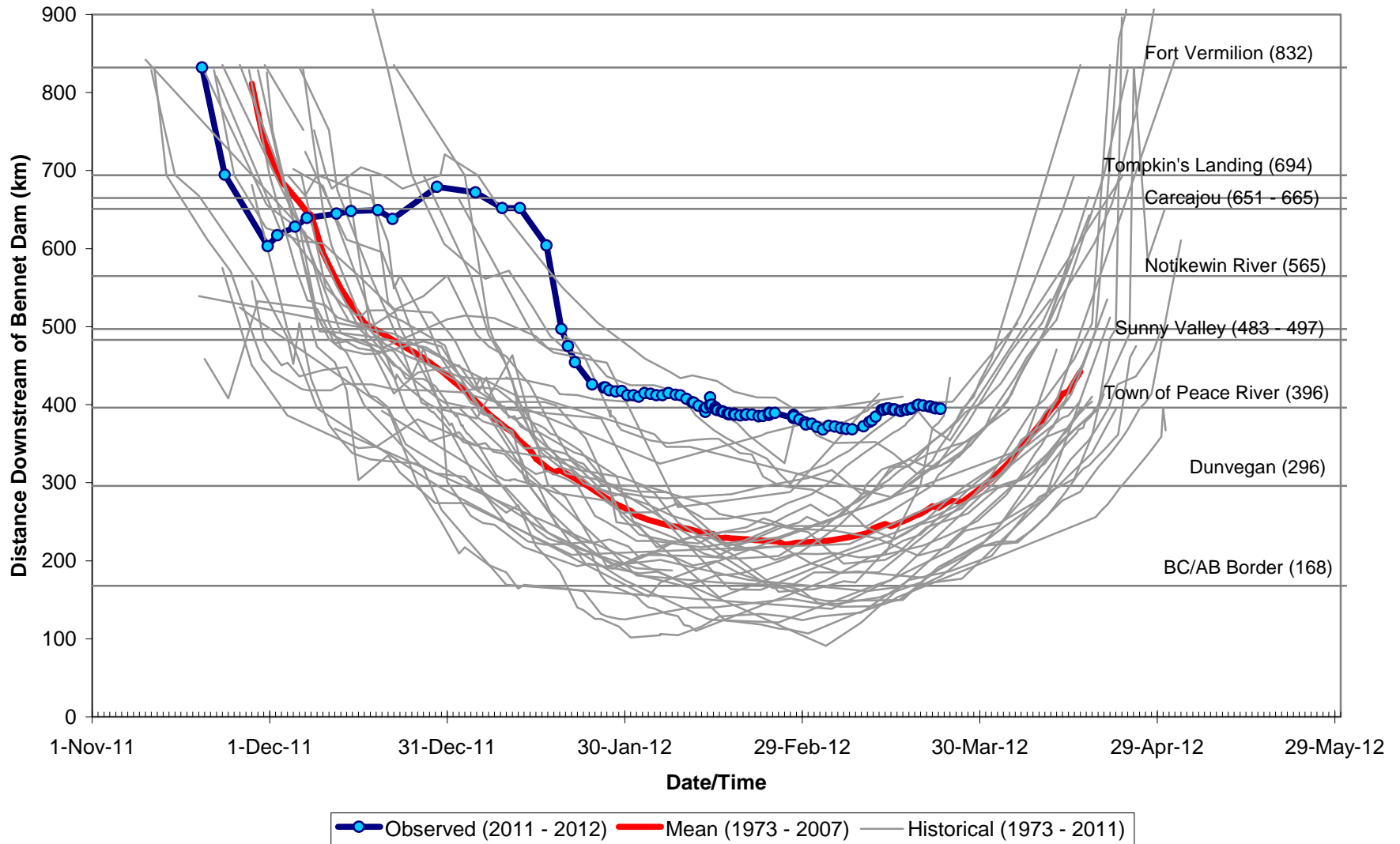
- March 21 – Ground observation - morning
 - Km 380 – Inflowing ice concentration estimated at 40% and is composed of single pans and small rafts of pans
 - Km 397 - Inflowing ice concentration estimated at 50% and is composed of rafts. Only 40% of the river width is open and flowing; ice covers the remaining 60%
 - Km 396.7 to km 398.2 – The ice cover in the left (west) channel around Bewley Island is juxtaposed, and is not snow covered so was formed since the snowfall overnight
 - km 397.5 – Ice front at 10:00 MST in the right (east) channel around Bewley Island. Most of the new ice is being diverted into this channel
- March 21 – Ground observation - afternoon
 - km 397.5 – Ice front at 15:05 MST in the left (west) channel around Bewley Island
 - km 397.3 – Ice front at 16:41 MST
- March 22 – Ground Observations – morning
 - Km 380 – Incoming surface ice concentration estimated at 15%, and is composed of single opaque pans
 - km 395.6– Ice front at 08:15 MST (just upstream of the rail bridge)
 - km 396.8 to 398 – New juxtaposed ice cover formed in left (west) channel around Bewley Island, and in the right (east) channel up to km 397
 - km 395.5– Ice front at 11:45 MST
- March 22 – Ground Observations – afternoon
 - km 395.2– Ice front at 14:30 MST
- March 23 – Ground observations
 - km 394.75 – Ice front at 8:00 MST
 - km 394.5 – Ice front at 10:00 MST (mouth of the Heart River). Inflowing surface ice concentration is estimated at 10%.

Temperature Forecast

The following table contains Environment Canada's observed and forecasted daily maximum and minimum temperatures through to Monday, 26 March.

Day	Date	Location		
		High Level	Peace River	Fort St. John
Yesterday	22-March	-8.4 / -23.5	-5.6 / -12.2	-6.5 / -13.2
Today	23-March	-7 / -15	-3 / -12	-2 / -14
Saturday	24-March	0 / -15	1 / -12	5 / -14
Sunday	25-March	6 / -16	6 / -11	6 / -13
Monday	26-March	4 / -7	5 / -8	4 / -9
Tuesday	27-March	6 / -9	8 / -6	5 / -8
Wednesday	28-March	7 / -8	10 / -6	7 / -3
Thursday	29-March	9 / -8	11 / -5	8 / -2
Average Max/Min for 23 March		1 / -13	3 / -9	4 / -8

Observed Peace River Ice Front Locations 2011-2012



Ground observations will continue until the ice front is downstream of the Shell Canada water intake near Highway 986.