

2011 – 2012 Peace River Report No. 21

The latest ground observation along the Peace River found that the ice front is downstream of km 417.5 (or more than 21.5 km downstream of the Highway 2 Bridge at the Town of Peace River) at 11:30 MST on March 29. Breakup on the Peace River is proceeding thermally at this time and the ice front has been retreating at a more typical rate over the past few days. The ice front is now out of visual range for a ground observation, and reliance will now be placed on the river level gauges and local observers to indicate the location of the ice front. River level gauges in the Smoky River basin have started to respond in the past few days to increased spring runoff with no problems being foreseen at this time.

Alberta Environment and Water, and BC Hydro are in contact regarding river ice conditions and operation of the BC Hydro Peace River facilities.

Observation Details

- March 26 – Ground observation - morning
 - km 398 to 400 – Approximately one third of the channel width is open in the right (east) channel around Bewley Island
 - km 400.3 – Upstream end of the brash ice in the right (east) channel around Bewley Island
 - km 400.5 – Front in the right channel around Bewley Island
 - km 401.8 – Upstream end of the brash ice in the left (west) channel around Bewley Island. Two thirds of the channel width is open
 - km 403.2 – Ice front at 11:20 MST in the left (west) channel around Bewley Island. Inflowing ice concentration is estimated to be 5% and is composed of pieces of brash ice.

- March 26 – Ground observation - afternoon
 - km 400.3 – Upstream end of brash ice in the right (east) channel around Bewley Island
 - km 401.0 – Front in the right channel around Bewley Island at 10:13 MST
 - km 400.7 – Upstream end of brash ice in the right (east) channel around Bewley Island
 - km 401.3 – Front in the right channel around Bewley Island at 12:43 MST
 - km 402.0 – Upstream end of brash ice in the left (west) channel around Bewley Island
 - km 402.4 – Front in the left channel around Bewley Island at 12:43 MST
 -

- March 27 – Ground observation
 - km 401.15 – Upstream end of the brash ice in the right (east) channel around Bewley Island
 - km 401.2 – Front in the right channel around Bewley Island. There is approximately 100 m of thermally darkened ice separating the right (east) and main (left/west) channels around Bewley Island
 - km 403.15 – Upstream end of the brash ice in the left (main) channel around Bewley Island
 - km 403.2 – Ice front at 07:30 MST in the left (main) channel around Bewley Island
 - km 403.2 to 405 – A string of narrow open leads

- March 28 – Ground observation
 - km 404 – The channel width is 70% open
 - km 407 to 409 – Adjacent to the left bank, only a narrow channel through the ice is open
 - km 409 to 412.9 – Narrow opening along the river center line
 - km 412.9 – Upstream end of brash ice
 - km 413.5 – Ice front at 10:00 MST (150 km downstream of Hwy. 986)

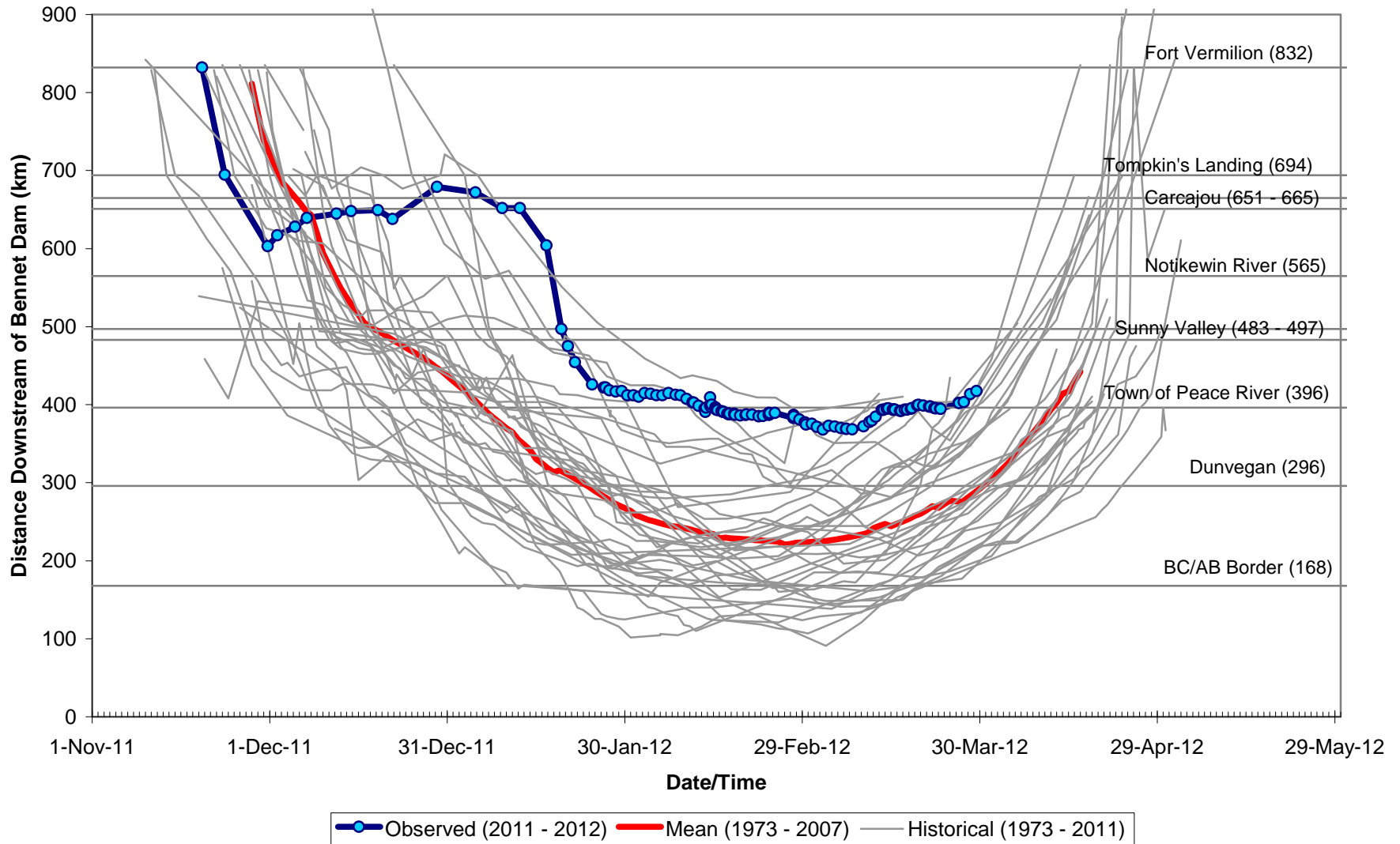
- March 29 – Ground observation
 - As of 11:30 MST the ice front was out of visual range for a ground observation (downstream of km 417.5)
 - km 427.6 – River level gauge at this location is indicating a decaying ice cover, but levels have not decreased due to a retreating ice front
 - River level gauges on the Smoky River at Watino, Little Smoky River near Guy and Simonette River near Goodwin are showing rising river levels in response to spring runoff

Temperature Forecast

The following table contains Environment Canada's observed and forecasted daily maximum and minimum temperatures through to Wednesday, 4 April.

Day	Date	Location		
		High Level	Peace River	Fort St. John
Yesterday	28-March	6.8 / -1.2	8.1 / -1.9	4.8 / -5.0
Today	29-March	9	8	9
Friday	30-March	10 / -4	9 / -7	6 / -2
Saturday	31-March	9 / -6	6 / -8	7 / -5
Sunday	1-April	8 / -8	4 / -8	3 / -9
Monday	2-April	5 / -4	9 / -7	8 / -7
Tuesday	3-April	6 / -6	10 / -3	6 / -4
Wednesday	4-April	7 / -3	9 / -2	6 / -2
Average Max/Min for 29 March		4 / -10	5 / -6	6 / -6

Observed Peace River Ice Front Locations 2011-2012



Further observations will be posted as they come in from local observers and as river level gauges indicate.