

2011 – 2012 Peace River Report No. 23

The latest ground observation along the Peace River located the ice front downstream of Fort Vermilion (km 832 or more than 435 km downstream of the Highway 2 Bridge at the Town of Peace River) at 17:40 MST on April 26. These observations were corroborated by the river level gauges. The ice front has been retreating at a rate of between 10 and 20 km/day since Report 22 was posted. Spring breakup on the Peace River is continuing without incident.

Alberta Environment and Water and BC Hydro are in contact regarding river ice conditions and operation of the BC Hydro Peace River facilities.

Observation Details

- April 22 – Ground observations by Alberta Transportation
 - km 694 - Ice front at 17:25 MST (Thompkins Landing)
- April 23 – Ground observations by Mackenzie County
 - km 832 – Ice is intact at Fort Vermilion, but deteriorated and dark. No snow cover remains, border flow and some ponding is evident.
- April 24 – Information from Alberta Transportation
 - km 694 – The LaCrete Ferry launched at Thompkins Landing and is operation 24 hours a day, 7 days a week.
- April 26 – Ground observations by Mackenzie County
 - km 832.0 – Movement of the ice is reported at Fort Vermilion
- April 27 – Ground observations by Mackenzie County
 - km 651.0 – River is open and free flowing at Fort Vermilion

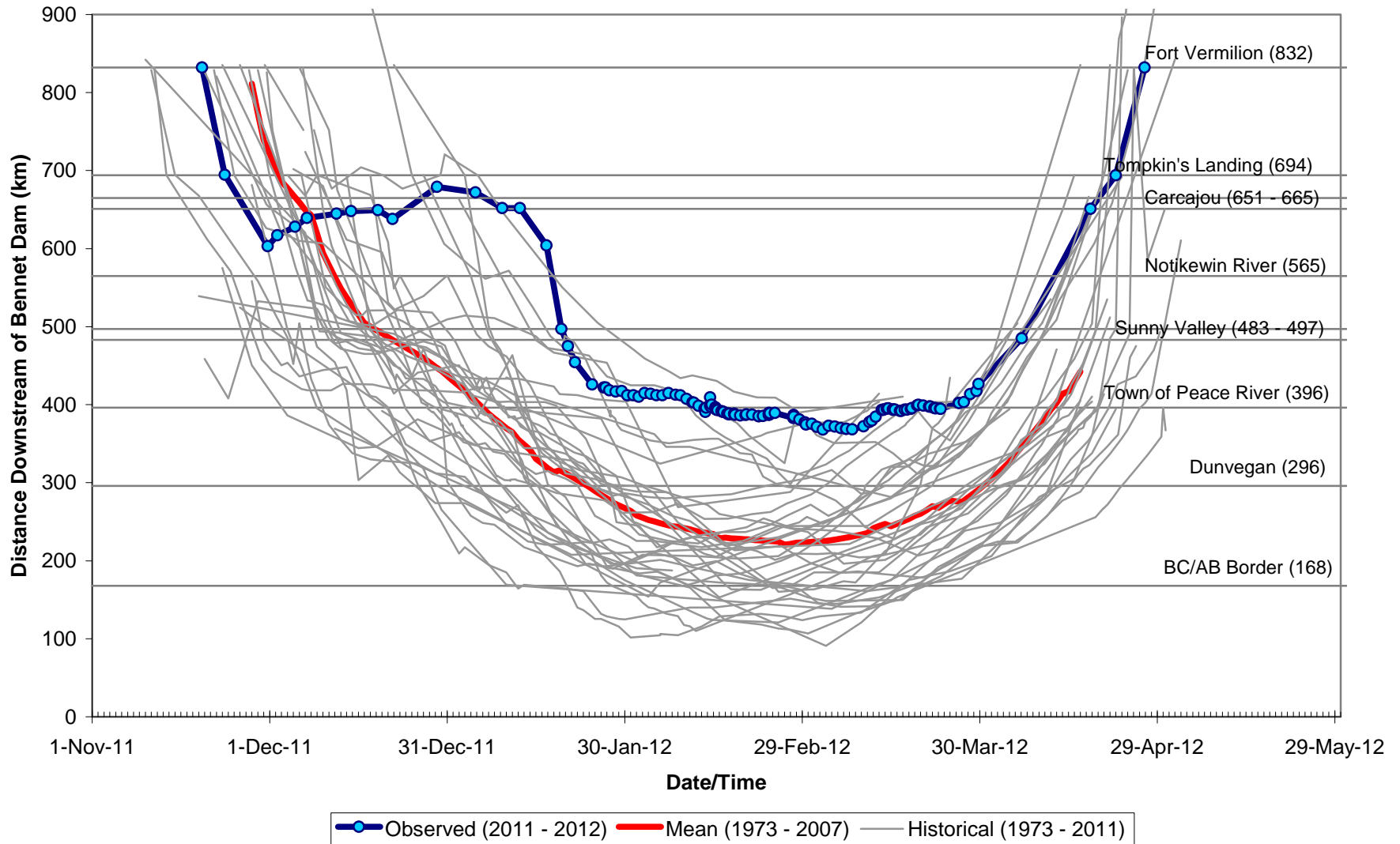
This will be the last observation report of the 2010-2011 ice season.

Temperature Forecast

The following table contains Environment Canada's observed and forecasted daily maximum and minimum temperatures through to Wednesday, 25 April.

Day	Date	Location		
		High Level	Peace River	Fort St. John
Yesterday	26-April	N/A	7.3 / 2.5	4.6 / 0.3
Today	27-April	10	15	11
Saturday	28-April	16 / 1	15 / 0	11 / 3
Sunday	29-April	15 / 1	13 / 4	12 / 3
Monday	30-April	15 / 3	13 / -1	12 / 2
Tuesday	1-May	13 / 5	10 / 4	11 / 3
Wednesday	2-May	10 / 1	13 / 1	10 / 1
Thursday	3-May	12 / 0	14 / 1	9 / 1
Average Max/Min for 19-April		13 / -1	14 / 1	13 / 1

Observed Peace River Ice Front Locations 2011-2012



Further observations will be posted as they come in from local observers and as river level gauges indicate.